

AUDLEYS WOOD  
HOTEL  
BASINGSTOKE, HAMPSHIRE



*Make the most  
of your stay*

---

# Shape your break

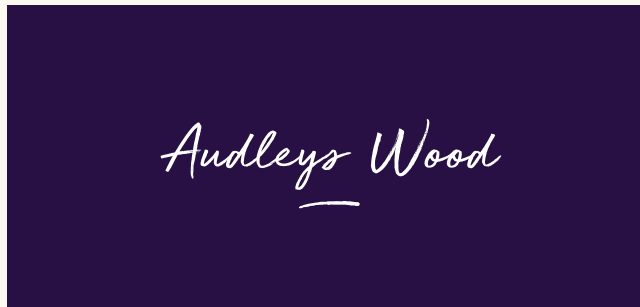
---

We are delighted to welcome you to Audleys Wood, where we invite you to reconnect, unwind, and make our house your home.

All year round you will be spoilt for choice for things to do within the hotel, not to mention the abundance to see and do on our doorstep. Below are just a few of the things you can discover during your stay.

This is your time - how will you spend it?

**Click on the tiles for inspiration to shape your break.**









# In the hotel

---

Arriving at Audleys Wood is just the start of a unique experience...

## Dining

There is a host of delicious food and drink experiences to try at our country estate:

### **The Conservatory Restaurant**

Our Conservatory Restaurant is a bright, light and elegant restaurant with a stunning vaulted ceiling and views out onto the grounds. Enjoy a simple yet refined menu with provenance firmly front of mind.

### **Long Lounge and Bar**

The Long Lounge and Bar are special features of any stay at Audleys Wood. With high ceilings, ornate wood panelling, the original staircase and stylish furniture, the effect is a sense of grandeur fit for any occasion. This is where we serve morning coffee, elevenses, light lunches, afternoon tea and stronger options such as Champagne, evening cocktails and late night digestifs.

### **Afternoon tea and alfresco dining**

Afternoon tea is a British classic and a firm favourite of our guests. If it is a nice day, dine alfresco on the terrace with views over the beautifully manicured lawns.

## Private dining

Choice at Audleys Wood extends well beyond the menu. For special occasions, why not book one of our elegant private rooms for your exclusive use?

## Dog friendly

You can even share your experience with your canine companion as we are proud to be a dog-friendly hotel.

## Games

We have a great selection of board games and in the summer months, our lovely lawns are perfect for a spot of croquet or giant tumble tower.

Please ask at Reception for more details.









# Walks

With Hampshire well-known for its picture postcard landscapes, you are in a rambler's paradise.

## The War Memorial Park – 0.5 to 1.5 mile circular

Three walks are described here. The shortest takes you through the historic western side of The War Memorial Park. This can be extended to incorporate more of the park, or further still to take in the old common. The walk is level for most of the way on good paths, with seating at various points along the way.

Starting point - Crossborough Hill Car Park, off London Road. Suitable for wheelchairs & pushchairs.

### Directions

1. Leave the car park via the western exit and walk along this path until you come to a footpath on the right. Take this footpath and walk through the woodland. Once you have left the woodland, follow the path round to the left. As you pass the gates to The War Memorial Park, on the right, you will see the War Memorial. Do not exit the park through the gates.
2. Continue along the path round the park, passing the aviary and the bandstand on the right and further on, a play area on the left. You can finish the walk here, taking the path on your left back to Crossborough Hill Car Park.
3. To continue, follow the path out of The War Memorial Park. Before the underpass, turn left and continue your walk past the tennis courts. To end the walk here, take the first footpath on your left. Follow this path past the John Arlott Centre back to Crossborough Hill Car Park.
4. For a longer walk, continue to walk through an avenue of trees. Continue along this path until you come to a junction. Take the path on your left and walk up the gradual incline past Costello Technical College, until you walk out of the park. You are now on London Road. Turn left and follow this path until you come to the first road on your left. This is Crossborough Hill. Walk to the end of Crossborough Hill and you are back at the car park.



### Walking directions from Audleys Wood:

To reach London Road, turn left out of Audleys Wood, at the roundabout take the second exit. At the second roundabout, go straight over onto Hackwood Road. London Road is 400 metres on the right hand side.



# Walks

## Eastrop Park and The War Memorial Park – 2.3 mile circular

This walk takes you from this popular park to the historic War Memorial Park and back. The walk has one uphill slope and good pathways, with seating at various points along the way. Starting point - Eastrop Park; lower car park, opposite the community centre. Suitable for wheelchairs & pushchairs.

### Directions

1. Leave the car park and walk in the direction of the town centre. To your right is the model boating lake, and beyond the wildlife area and balancing pond.
2. Keep walking through the park. On your left you will see the children's play area. Further along to your right are the boating lake and paddling pool.
3. Follow the footpath out of the park and you will see the water features to your right. The town centre is straight ahead.
4. Bear left and cross the road into Eastrop Way. On reaching London Road turn right, keeping to the footpath as far as the police station, cross the road to the Civic Offices.
5. Walk between the two council buildings. Directly in front of you is The War Memorial. Continue past The War Memorial, and enter the park through the large gates, bearing right, where you can view the aviary.
6. Continue along this pathway, which skirts the perimeter of the park, notice the bandstand to your right. Directly behind you will see Hackwood Park Gates. The children's play area is further along to your left.
7. Follow the path out of The War Memorial Park. Before the underpass take a left turn along the footpath, passing the tennis courts to your left, then straight on through an avenue of trees.
8. When you reach a junction, take the left hand turn and walk up the gradual incline.
9. When you exit the park, turn right into London Road and continue along the footpath until you reach a cycle path crossing. Cross the road here and turn right into Dead Man Lane. Follow this cycle/ footpath downhill until you reach a children's playground on the left. Bear right and immediately to your left is the footpath into Eastrop Park.
10. Turn left along the footpath. You have now returned to the car park.



### Walking directions from Audleys Wood:

To reach London Road, turn left out of Audleys Wood, at the roundabout take the second exit. At the second roundabout, go straight over onto Hackwood Road. London Road is 400 metres on the right hand side.



# Walks

## The War Memorial Park, Black Dam Ponds and Crabtree Plantation – 1.7 or 3.5 mile option

The first part of the walk takes you from The War Memorial Park to Black Dam Ponds. You then have the choice of returning to the park or continuing the walk to Crabtree Plantation and back. Starting point - Crossborough Hill Car Park, off London Road.

### Directions

1. Leave the car park via the eastern exit and follow the path past the John Arlott Centre, and down towards the tennis courts. Keep following this path past the tennis courts. Just before the subway turn left. Follow this path through the avenue of trees until you come to another junction.
2. Go straight on, walking down the slope towards the road. At the path junction, go right and cross the road at the island. Walk over the bridge looking out for steps on your left. Walk down these steps and bear left into Black Dam Ponds.
3. Follow the path, bearing left at the first junction. Cross the small wooden bridge, and continue along the path, with a large pond on your right. Walk past the information board and follow the path round to the main pond.
4. At the path junction, bear left following the path towards the picnic area. Walk up to the duck feeding platform.

For the shorter walk, turn around and retrace your steps, then continue from number 10.

5. For the longer walk, go past the duck-feeding platform, following the path until you reach the underpass.
6. Walk through the underpass, bearing left at the path junction. You are now in Black Dam Nature Reserve. Follow this path until you come to another path junction, and bear left again.
7. Follow this path into an open field. You are now in Crabtree Plantation. Follow the gravel path up the hill, and across the field. There is woodland on your left. Walk along the gravel path until it forks, and bear left. Go along this path, underneath the archway, and into the car park. Bear left, walking around the car park until you come to a path that leads into the woodland. Follow this path through the woodland, keeping the road on your right.
8. At the end of the woodland, follow the gravel path back down the hill into Black Dam Nature Reserve.
9. Go through the underpass to Black Dam Ponds. Bear right and follow the path past the duck-feeding platform.
10. At the path junction, bear left, so that the pond is on your right. Follow the path until the next junction, and bear left at the metal barrier. Walk up the gentle slope and follow the path round to the right, and across the bridge. Cross the road at the island, and walk back up the slope into The War Memorial Park.
11. At the path junction, bear left and continue to the first junction on the right. Take this path back to the car park at Crossborough Hill.









# Family Trips

---

From the educational to the inspirational, you will find plenty of fun for all the family.

## [Basingstoke Aquadrome](#) - 4 miles away

With three flume slides, rapids, lazy river, waves, interactive water features, spa-pool and beach, you'll find this the ideal place to have a splash about with family and friends.

## [Basingstoke Leisure Park](#) - 4 miles away

There is something for everyone here, with a wide range of activities including ice skating, adventure golf, indoor skydiving and a multiplex cinema.

## [Milestones Museum](#) - 4 miles away

The county's recent past is brought to life at Milestones, Hampshire's living history museum. The sheer volume of visitors makes it one of the most successful attractions in the south, offering nostalgia and providing an educational experience for children which is great fun at the same time. The vast hi-tech structure of this award-winning museum houses a network of 19th and early 20th century streets.

## [Watercress Line Steam Railway](#) - 13 miles away

Hampshire's only preserved steam railway, the Watercress Line runs for 10 magical miles. Powerful locomotives lead the trains through beautiful Hampshire country scenery to the market town of Alton.

## [Birdworld](#) - 17 miles away

This 26 acre park is home to hundreds of unusual birds, as well as a fabulous farm, an aquarium and the wonderful Forest Lodge Garden Centre. There is also a busy schedule of daily events to enjoy.

## [Farnborough Airshow](#) - 19 miles away

Taking place every two years, the Farnborough International Airshow is one of the most iconic events in Hampshire. The show features a jam-packed flying display both on the ground and in the air. Aerobatic display teams, wing walkers, fast jets, military giants, civil airliners and historic aircraft will grace the skies over Farnborough to celebrate the Pioneers of the Sky.

## [LEGOLAND®](#) - 30 miles away

With over 55 interactive rides, live shows, building workshops, driving schools and attractions, all set in 150 acres of beautiful parkland, LEGOLAND Windsor is a unique family experience. Young and old alike will be fascinated by the incredible LEGO models throughout the park.

## [Thorpe Park](#) - 34 miles away

One of the UK's most thrilling theme parks with incredible rides including Tidal Wave, Slammer and Rush. Ride the "unholy trinity" of fantastic roller coasters - the 10 looping Colossus, the heart pounding Nemesis Inferno and Europe's tallest fastest launched roller coaster, Stealth.







# For Couples

---

With romantic scenery all around you, here are just a few places to enjoy with your special someone.

## [Haymarket Theatre](#) - 2 miles away

Live the drama at the Haymarket Theatre. With a varied programme of theatre, drama and dance, there have never been more opportunities for great nights out in Basingstoke.

## [Weybrook Park Golf Club](#) - 6 miles away

Weybrook Park boasts having had two US Open Golf Champions and one winning Ryder Cup Captain play there since its opening in 1997. Based on chalk, Weybrook Park has proven itself an ideal venue for all year round golf and is a short drive away from Audleys Wood Hotel.

## [Hattingley Valley Vineyard](#) - 9 miles away

Hattingley Valley has quickly established itself as one of the UK's most successful wineries, winning over 100 medals, 13 trophies, and Best in Class for its English sparkling wines. Visit for tours, tastings and more.

## [Bombay Sapphire Gin Distillery](#) - 11 miles away

Bombay Sapphire Distillery opened its doors at Laverstoke Mill in 2014 and offers a Discovery Experience with the chance to learn about the 10 botanicals used to make this iconic gin and visit the Botanical Dry Room to uncover your flavour preferences.

## [Wellington Country Park](#) - 12 miles away

Established in 1974 by the Eighth Duke and Duchess of Wellington, the park is set in 350 acres of beautiful parklands surrounding a 35 acre lake. Enjoy wide open spaces, coniferous woods, nature trails, picnic sites, superb play areas and a petting barn.

## [Grange Park Opera](#) - 36 miles away

Founded in 1998, Grange Park Opera has quickly established itself as one of the major music festivals in Europe's operatic summer season.

The season runs for seven weeks, with four productions staged in a 550 seat theatre built within the 19th century orangery.







# Historical

---

Step back in time and uncover both Audleys Wood and Hampshire's rich heritage and cultural legacy.

## [The Wyne](#) - 7 miles away

Explore a former Tudor powerhouse turned 17th-century family home, set in gardens, woodlands and wetlands. Built in the 16th century for Lord Sandys, Henry VIII's Lord Chamberlain, the house acquired a classical portico in the mid-17th century and contains a fascinating Tudor Chapel with renaissance glass, a Palladian staircase and a wealth of old panelling and fine furniture.

## [Jane Austen's House](#) - 12 miles away

This inspiring Hampshire cottage was Jane Austen's home and the birthplace of her six beloved novels. Today it is an independent museum celebrating her life, works and legacy. The pretty garden contains many varieties of plants and herbs common in the late 18th century and is still a peaceful spot.

## [Highclere Castle](#) - 17 miles away

This castle was used as the main filming location for the period drama Downton Abbey. Set amidst 1000 acres of spectacular parkland, there are plenty of opportunities to visit the beautiful Victorian castle and its gardens all year round.

## [Stonehenge](#) - 41 miles away

Stonehenge is one of the wonders of the world and the best-known prehistoric monument in Europe. Witness the ring of standing stones and discover the site's special exhibitions.

## [Beaulieu](#) - 44 miles away

Enjoy a day at the world famous National Motor Museum, home to a stunning collection of automobiles telling the history of motoring through modern rally cars and F1 Grand Prix machines. There are over 800 years of heritage to be seen on the Beaulieu Estate, which has been in the ownership of the Montagu family for over four centuries.





AUDLEYS WOOD HOTEL

*Let the adventure begin...*



**Audleys Wood Hotel**

Alton Road, Basingstoke, Hampshire RG25 2JT

01256 817555

audleyswood@handpicked.co.uk

[handpickedhotels.co.uk/audleyswood](https://handpickedhotels.co.uk/audleyswood)

*Hand*PICKED  
HOTELS