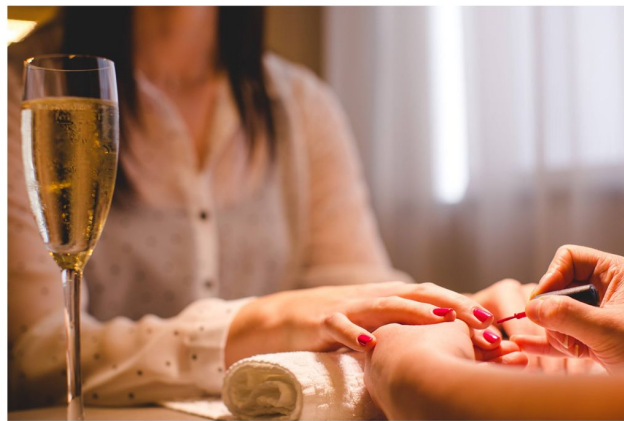


Spa Treatment Menu



*Hand*PICKED
— HEALTH CLUBS & SPAS —

Face

Touch Facials:

ELEMIS and Comfort Zone hands-on facial treatments use touch as a powerful diagnostic tool, product is applied using a combination of ancient and modern massage techniques from around the world.

Anti-Ageing Touch Facials

[comfort zone] Sublime Skin Deluxe Lift Facial	70 minutes	£105
[comfort zone] Sublime Skin Active Lift Facial	55 minutes	£89
[comfort zone] Sublime Skin Double Peel Facial	55 minutes	£89
ELEMIS Pro-Glow Smooth Facial	55 minutes	£89

Skin Specific/Prescriptive Facials

(Tailored by your therapist)

ELEMIS Pro-Glow Brilliance Facial	55 minutes	£89
ELEMIS Pro-Glow Resurface Facial	55 minutes	£89
ELEMIS Pro-Glow Renewal Facial	55 minutes	£89
ELEMIS Pro-Glow Express Facial	25 minutes	£55

Technology Facials:

ELEMIS BIOTEC facials use the pioneering innovation of the BIOTEC machine to switch the skin back on, increasing its natural cellular energy.

Anti-Ageing Technology Facials

ELEMIS Biotec Pro-Glow Smooth Facial+	55 minutes	£89
---------------------------------------	------------	-----

Skin Specific/Prescriptive Technology Facials

ELEMIS Biotec Pro Glow Brilliance Facial+	55 minutes	£89
ELEMIS Biotec Pro Glow Resurface Facial+	55 minutes	£89

Massage

[comfort zone] Aromasoul Elements Massage	55 minutes	£89
ELEMIS Freestyle Deep Tissue Massage	55 minutes	£89
Traditional Full Body Massage	55 minutes	£89
ELEMIS Freestyle Deep Tissue Massage	40 minutes	£72
ELEMIS Freestyle Deep Tissue Massage	25 minutes	£55
Traditional Back Neck & Shoulder Massage	25 minutes	£55

Heat Treatments

ELEMIS Deeper than Deep Hot Stone Massage	55 minutes	£99
ELEMIS Deeper than Deep Hot Stone Massage	40 minutes	£82

Combination Treatments

Full Body Massage & Luxury Facial Combo	115 minutes	£140
Luxury Facial & Back Neck, Shoulder Massage Combo	85 minutes	£120
Full Body Massage & Express Facial Combo	85 minutes	£120
Face & Body Combo Treatment	55 minutes	£89
Body Scrub & Massage Combo Treatment	55 minutes	£89
Massage & Shape & Polish Combo Treatment	55 minutes	£89
Fingers & Toes Combo Treatment	55 minutes	£59

Body: Rituals, Scrubs & Wraps

[comfort zone] Himalayan Salt Ritual	55 minutes	£89
ELEMIS Frangipani Body Nectar Nourishing Wrap	55 minutes	£89
ELEMIS Intensely Cleansing Lime & Ginger Salt Scrub	25 minutes	£55
ELEMIS Intensely Cleansing Frangipani Salt Scrub	25 minutes	£55

Pregnancy

ELEMIS Peaceful Pregnancy Massage	55 minutes	£89
ELEMIS Pregnancy Facial	55 minutes	£89

Suitable for all mothers-to-be from 13 weeks of pregnancy

Speciality Treatments

Reflexology	40 minutes	£72
Indian Head Massage	25 minutes	£55

Hands & Feet

Luxury Pedicure	70 minutes	£65
Classic Pedicure	55 minutes	£55
Luxury Manicure	55 minutes	£55
Classic Manicure	40 minutes	£48
Shape and Polish for Toes	25 minutes	£30
Shape and Polish for Fingers	25 minutes	£30

Please bring open toe shoes to wear after your pedicure.

Gel Nails

GEL Removal & Pedicure*	70 minutes	£65
GEL Removal & Manicure*	70 minutes	£65
GEL Pedicure	55 minutes	£58
GEL Manicure	40 minutes	£53
GEL Shape & Polish	40 minutes	£38
GEL Removal*	30 minutes	£20

**Removal of soft gels only i.e brush on gels/soak off gels. We are not able to remove hard gels or acrylics requiring specialist equipment. If unsure we therefore strongly recommend you call the spa direct prior to making a booking*

Terms and conditions. Please visit our website for further information on: Hand Picked spa booking terms and conditions. Opening and closing times. How to book and methods of payment. Cancellation policy. Health guidelines.

handpickedhotels.co.uk/spa-termsandconditions

All prices may be subject to change.

All prices include GST at 5% and may be subject to change.

Grand Jersey Hotel and Spa Esplanade, St Helier, Jersey, JE2 3QA 01534 288450
Central Reservations 01642 706634 or 0845 458 0904*

handpickedhotels.co.uk/grandjersey

*Calls cost 5p per minute plus your provider's access charge.

*Hand*PICKED
HOTELS